

REC TWINPEAK 2S 72 SERIES

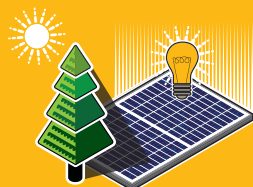
PREMIUM SOLAR PANELS WITH SUPERIOR PERFORMANCE

REC TwinPeak 2S 72 Series solar panels feature an innovative design with high efficiency and an industry-leading lightweight, yet robust construction, enabling customers to get the most out of the installation area.

Combined with the product quality and reliability of a strong and established European brand, REC TwinPeak 2S 72 panels are ideal for commercial rooftops worldwide.



**REDUCES BALANCE OF
SYSTEM COSTS**



**IMPROVED PERFORMANCE
IN SHADED CONDITIONS**

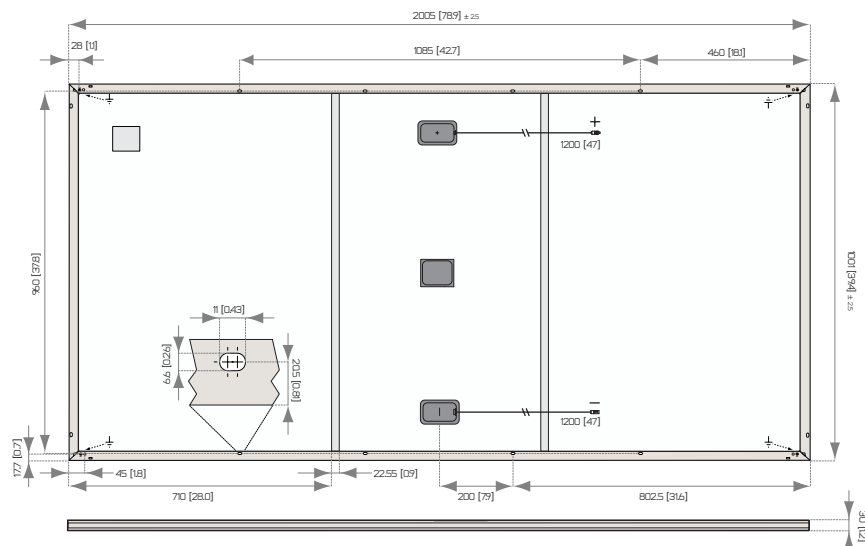


**INDUSTRY-LEADING LIGHTWEIGHT
72-CELL PANEL**



**100%
PID FREE**

REC TWINPEAK 25 72 SERIES



All measurements in mm [in]

ELECTRICAL DATA @ STC	Product Code*: RECxxxTP25 72					
Nominal Power - P_{MAX} (Wp)	330	335	340	345	350	355
Watt Class Sorting - (W)	-0/+5	-0/+5	-0/+5	-0/+5	-0/+5	-0/+5
Nominal Power Voltage - V_{MPP} (V)	38.1	38.3	38.5	38.7	38.9	39.1
Nominal Power Current - I_{MPP} (A)	8.67	8.75	8.84	8.92	9.00	9.09
Open Circuit Voltage - V_{OC} (V)	46.0	46.2	46.3	46.5	46.7	46.8
Short Circuit Current - I_{SC} (A)	9.44	9.52	9.58	9.64	9.72	9.78
Panel Efficiency (%)	16.5	16.7	16.9	17.2	17.4	17.7

Values at standard test conditions STC (airmass AM 1.5, irradiance 1000 W/m², cell temperature 77°F (25°C)).
At low irradiance of 200 W/m² (AM 1.5 and cell temperature 77°F (25°C)) at least 95% of the STC module efficiency will be achieved.
*xxx indicates the nominal power class (P_{MAX}) at STC, and can be followed by the suffix XV for modules with a 1500 V maximum system rating.

ELECTRICAL DATA @ NOCT	Product Code*: RECxxxTP25 72					
Nominal Power - P_{MAX} (Wp)	244	252	257	260	264	268
Nominal Power Voltage - V_{MPP} (V)	34.9	35.5	35.7	35.8	36.0	36.2
Nominal Power Current - I_{MPP} (A)	6.99	7.10	7.19	7.25	7.32	7.39
Open Circuit Voltage - V_{OC} (V)	42.3	42.8	42.9	43.1	43.2	43.3
Short Circuit Current - I_{SC} (A)	7.44	7.74	7.79	7.84	7.90	7.95

Nominal cell operating temperature NOCT (800 W/m², AM 1.5, windspeed 1 m/s, ambient temperature 68°F (20°C)).
*xxx indicates the nominal power class (P_{MAX}) at STC, and can be followed by the suffix XV for modules with a 1500 V maximum system rating.

CERTIFICATION



UL 1703, Fire classification: Type 1 (1500 V XV); Type 2 (1000 V);
IEC 61215, IEC 61730, IEC 62804 (PID), IEC 62716 (Ammonia),
IEC 61701 (Salt Mist level 6), ISO 11925-2 (Class E)
ISO 9001: 2015, ISO 14001: 2004, OHSAS 18001: 2007

WARRANTY

20 year product warranty
25 year linear power output warranty
Max. performance degradation of 0.5% p.a. from 97.5% in year 1
See warranty conditions for further details.

17.7% EFFICIENCY
20 YEAR PRODUCT WARRANTY
25 YEAR LINEAR POWER OUTPUT WARRANTY

TEMPERATURE RATINGS

Nominal Operating Cell Temperature (NOCT) 44.6°C (±2°C)
Temperature Coefficient of P_{MAX} -0.36 %/°C
Temperature Coefficient of V_{OC} -0.30 %/°C
Temperature Coefficient of I_{SC} 0.066 %/°C

GENERAL DATA

Cell type: 6 strings of 24 REC half-cut mc-Si PERC
Glass: 3.2 mm (0.13") solar glass with anti-reflection surface treatment
Back Sheet: Highly resistant polyester
Frame: Anodized aluminum (silver)
Support bars: Anodized aluminum
Junction Box: IP67 rated with 3 bypass diodes
4 mm² (12 AWG) PV wire, 1.2 m + 1.2 m (47" + 47")
Connectors: Stäubli MC4-Evo 2
PV-KBT4-EVO-2 / PV-KST4-EVO-2 (4 mm²)
in accordance with IEC 62852, IP68 only when connected
Tonglin TL-Cable01S-F (4 mm²)
in accordance with IEC 62852, IP68 only when connected
Origin: Made in Singapore

MAXIMUM RATINGS

Operational temperature: -40 ... +85°C (-40 ... +185°F)
Maximum System Voltage: 1000 V / 1500 V
Design load (+): snow 75.2 lbs/ft² (3600 Pa)*
Maximum test load (+): 112.8 lbs/ft² (5400 Pa)*
Design load (-): wind 33.4 lbs/ft² (1600 Pa)*
Maximum test load (-): 50.1 lbs/ft² (2400 Pa)*
Max series fuse rating: 25 A
Max reverse current: 25 A
* Safety factor 1.5
* See installation manual for mounting instructions

MECHANICAL DATA

Dimensions: 2005 x 1001 x 30 mm (78.9" x 39.4" x 1.2")
Area: 2.01 m² (21.6 ft²)
Weight: 22 kg (48.5 lbs)

Note! Specifications subject to change without notice.

Founded in Norway in 1996, REC is a leading vertically integrated solar energy company. Through integrated manufacturing from silicon to wafers, cells, high-quality panels and extending to solar solutions, REC provides the world with a reliable source of clean energy. REC's renowned product quality is supported by the lowest warranty claims rate in the industry. REC is a Bluestar Elkem company with headquarters in Norway and operational headquarters in Singapore. REC employs around 2,000 people worldwide, producing 1.5 GW of solar panels annually.


www.recgroup.com