



Advancing the Power of the Sun

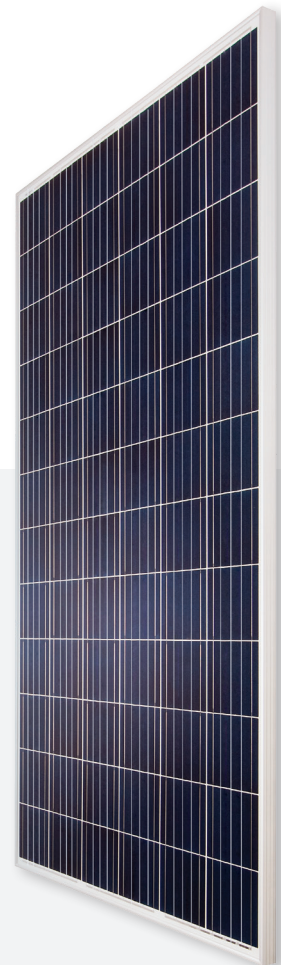
**72 Cell Poly
320-340W**

BVM6612P

0~+5W
Power Tolerance

17.5%
Maximum Efficiency

320-340W
Power Output Range



39.06 x 77.01 Inches
Silver Frame / White Backsheet



High Quality and Reliable Modules

- ◆ Withstand up to 5400 Pa snow load and 2400 Pa wind load
- ◆ 2 EL inspections per cell/module for defect-free consistency
- ◆ Type 1 fire-rating per UL 1703 edition 3
- ◆ High salt and ammonia resistance certified by TUV Rheinland
- ◆ 0~+5 W guaranteed positive tolerance
- ◆ Rugged design for long-term durability; passed extended reliability tests



Warranty

- ◆ 12-year product warranty
- ◆ 25-year linear power output warranty



Comprehensive Certificates for Products and Management

- ◆ UL 1703, IEC 61215, IEC 61730, CEC listed, MCS and CE
- ◆ ISO 9001 for Quality Management Systems
- ◆ ISO 14001 for Environmental Management Systems
- ◆ ISO 18001 Occupational Health and Safety Systems

Listed in Bloomberg New Energy Finance's tier 1 list as of 1Q 2018



Boviet Solar USA ◆ 1740 Technology Dr., Suite 205 ◆ San Jose, CA 95110
BOVIETSOLARUSA.COM ◆ 877.253.2858 ◆ SALES@BOVIETSOLARUSA.COM

Electrical Characteristics STC

	BVM6612P-320	BVM6612P-325	BVM6612P-330	BVM6612P-335	BVM6612P-340
Maximum Power (Pmax)	320W	325W	330W	335W	340W
Maximum Power Current (Imp)	8.65A	8.74A	8.83A	8.92A	9.00A
Maximum Power Voltage (Vmp)	37.0V	37.2V	37.4V	37.6V	37.8V
Short Circuit Current (Isc)	9.17A	9.25A	9.33A	9.41A	9.49A
Open Circuit Voltage (Voc)	45.5V	45.7V	45.8V	46.1V	46.5V
Module Efficiency	16.5%	16.7%	17.0%	17.2%	17.5%
Power Tolerance	0~+5W	0~+5W	0~+5W	0~+5W	0~+5W
STC: AM1.5, Irradiance 1000W/m ² , 25°C					

Electrical Characteristics NOCT

	BVM6612P-320	BVM6612P-325	BVM6612P-330	BVM6612P-335	BVM6612P-340
Maximum Power (Pmax)	237W	241W	245W	248W	251W
Maximum Power Current (Imp)	6.93A	7.00A	7.07A	7.15A	7.22A
Maximum Power Voltage (Vmp)	34.1V	34.3V	34.5V	34.7V	34.8V
Short Circuit Current (Isc)	7.35A	7.41A	7.47A	7.55A	7.61A
Open Circuit Voltage (Voc)	42.7V	42.9V	43.0V	43.2V	43.4V
NOCT: AM1.5, Irradiance 800W/m ² , 20°C, Wind speed 1m/s					

Mechanical Characteristics

Solar Cell	Polycrystalline 6.14 x 6.14 inch, 72 (6 x 12) pcs. in series
Glass	High transparency, low iron, AR coated tempered glass 4 mm (0.16 inch)
Frame	Anodized aluminum alloy
Junction Box	IP67 rated, with 3 bypass diode
Output Cable	4 mm ² (EU)/12 AWG (US), 43.30/47.244 inch
Connector	MC4 compatible
Dimension	77.01 x 39.06 x 1.57 inch
Weight	58.42 lb

Thermal Characteristics

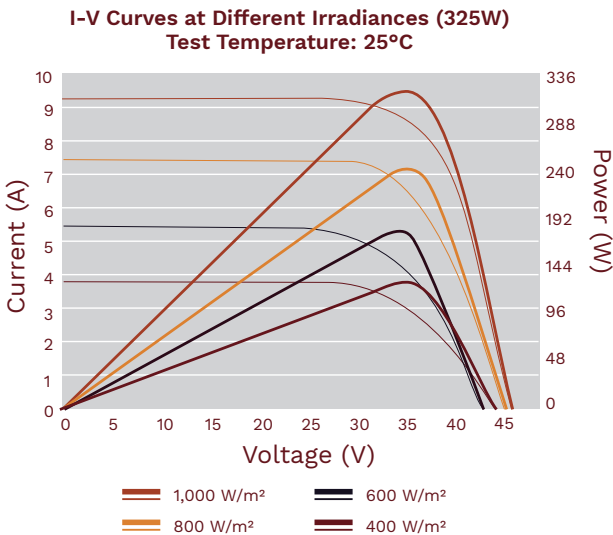
Pmax Temperature Coefficient	-0.41%/K
Voc Temperature Coefficient	-0.31%/K
Isc Temperature Coefficient	+0.05%/K
NOCT	113±3.6°F

Maximum Ratings

Operating Temperature	-40°F~185°F
Maximum Series Fuse Rating	15A
Maximum System Voltage	1000V/1500V DC

Packing Information

Pieces per pallet	26
Pallets per container (40HQ)	24
Pieces per container (40HQ)	624
Pallet weight/size	1671.1 lb/78.41 x 44.49 x 45.08 inch



Irradiance: AM 1.5, 1,000W/m² (325W)

