



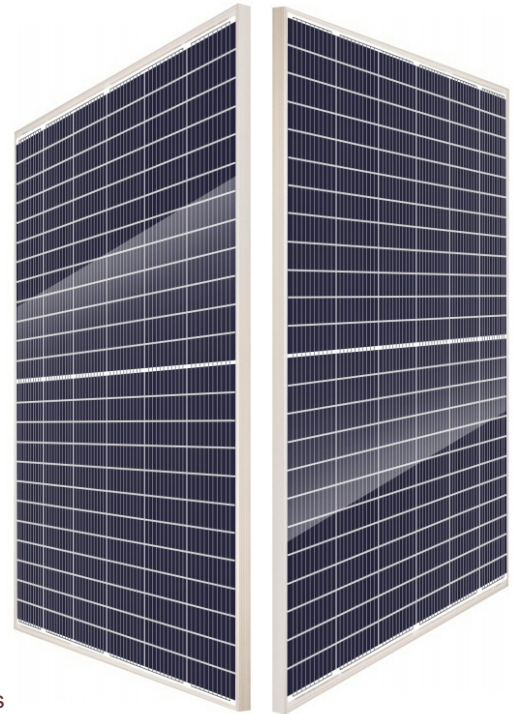
Advancing the Power of the Sun

144 Cell Mono  
530-550W  
BVM7612M-H-HC-BF-DG

0~+5W  
Power Tolerance

21.1%  
Maximum Efficiency

530-550W  
Power Output Range



44.65 x 90.4 Inches

Silver Frame / Transparent Backsheet



High Quality and Reliable Modules

- ◆ Withstand up to 5400 Pa snow load and 2400 Pa wind load
- ◆ 2 EL inspections per cell/module for defect-free consistency
- ◆ High salt and ammonia resistance certified
- ◆ 0~+5 W guaranteed positive tolerance
- ◆ Rugged design for long-term durability; passed extended reliability tests



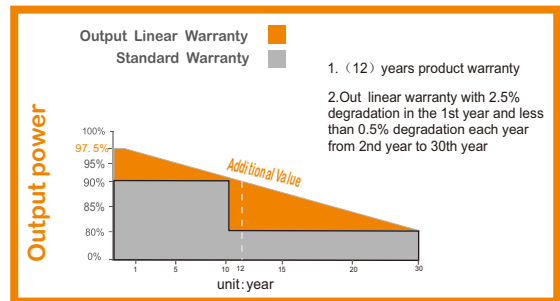
Warranty

- ◆ 12-year product warranty
- ◆ 30-year linear power output warranty



Comprehensive Certificates for Products and Management

- ◆ UL 61730, IEC 61215, IEC 61730, CEC listed, MCS and CE
- ◆ ISO 9001 for Quality Management Systems
- ◆ ISO 14001 for Environmental Management Systems
- ◆ OHSAS 18001 Occupational Health and Safety Systems



Listed in Bloomberg New Energy Finance's tier 1 list as of 4Q 2020



2107 N 1st Street Suite 550 San Jose, CA 95131

BOVIETSOLARUSA.COM ♦ 877.253.2858 ♦ SALES@BOVIETSOLARUSA.COM

## Electrical Characteristics STC

	BVM7612M-530-H-HC-BF-DG	BVM7612M-535-H-HC-BF-DG	BVM7612M-540-H-HC-BF-DG	BVM7612M-545-H-HC-BF-DG	BVM7612M-550-H-HC-BF-DG
Maximum Power (Pmax)	530W	535W	540W	545W	550W
Maximum Power Current (Imp)	12.66A	12.71A	12.76A	12.82A	12.88A
Maximum Power Voltage (Vmp)	41.94V	42.17V	42.40V	42.58V	42.76V
Short Circuit Current (Isc)	13.43A	13.48A	13.55A	13.72A	13.84A
Open Circuit Voltage (Voc)	49.71V	49.80V	49.89V	49.98V	50.13V
Module Efficiency	20.3%	20.5%	20.7%	20.9%	21.1%
Power Tolerance	0~+5W	0~+5W	0~+5W	0~+5W	0~+5W
STC: AM1.5, Irradiance 1000W/m <sup>2</sup> , 25°C					

## Electrical Characteristics NOCT

	BVM7612M-530-H-HC-BF-DG	BVM7612M-535-H-HC-BF-DG	BVM7612M-540-H-HC-BF-DG	BVM7612M-545-H-HC-BF-DG	BVM7612M-550-H-HC-BF-DG
Maximum Power (Pmax)	417W	421W	425W	429W	433W
Maximum Power Current (Imp)	10.16A	10.24A	10.32A	10.40A	10.48A
Maximum Power Voltage (Vmp)	41.1V	41.15V	41.20V	41.25V	41.32V
Short Circuit Current (Isc)	10.71A	10.74A	10.78A	10.82A	10.92A
Open Circuit Voltage (Voc)	49.0V	49.46V	49.79V	50.17V	49.87V

NOCT: AM1.5, Irradiance 800W/m<sup>2</sup>, 20°C, Wind speed 1m/s

## Mechanical Characteristics

## Thermal Characteristics

Solar Cell	Bifacial-Monocrystalline 7.17 x 3.585 inch, 144 (6 x 24) pcs in series	Pmax Temperature Coefficient	-0.37%/K
Double Glass	2.0mm AR coating solar glass+2.0mm solar glass,low iron	Voc Temperature Coefficient	-0.30%/K
Frame	Anodized aluminum alloy	Isc Temperature Coefficient	+0.06%/K
Junction Box	IP68 rated, with 3 bypass diode	NOCT	113±35.6°F
Output Cable	4 mm <sup>2</sup> (EU)/12 AWG (US), 39.38 inch		
Connector	MC4 compatible		
Dimension	90.4x 44.65 x 1.38 inch		
Weight	73.86 lb		

## Maximum Ratings

## Packing Information

Operating Temperature	-40°F~185°F	Pieces per pallet	30
Maximum Series Fuse Rating	30A	Pallets per container (40HQ)	20
Maximum System Voltage	1000/1500V DC	Pieces per container (40HQ)	600

## Bifacial Output-Backside Power Gain

Pallet weight/size 2290 lb/ 91.37 x 43.31 x 49.30 inch

10%	Pmax (W)	583	589	594	599.5	605
	Module efficiency (%)	22.39	22.62	22.81	23.03	23.24
20%	Pmax (W)	636	642	648	654	660
	Module efficiency (%)	24.43	24.66	24.88	25.12	25.35

