

100/125 kW, 1500 Vdc String Inverters for North America

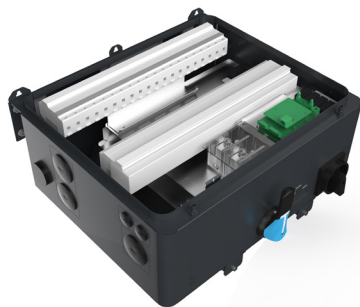


CPS SCH100/125KTL-DO/US-600

The 100 and 125 kW high power CPS three-phase string inverters are designed for ground mount and carport applications at 1500 Vdc. The units are high performance, advanced, and reliable inverters designed specifically for the North American environment and grid. High efficiency at 99.1% peak and 98.5% CEC, wide operating voltages, broad temperature ranges, and a NEMA Type 4X enclosure enable this inverter platform to operate at high performance across many applications. The CPS 100/125 kW products ship with the Distributed or Centralized Wire Box, each fully integrated and separable with AC and DC disconnect switches. Enhanced DC Wire Boxes are available to allow DC disconnection under short circuit conditions. The CPS FlexOM Gateway enables communication, controls, and remote product upgrades.

Key Features

- UL 1741-SA/SB and IEEE 1547-2018 certified
- Touch-safe DC Fuse holders add convenience and safety
- CPS FlexOM Gateway enables remote firmware upgrades
- Integrated AC and DC disconnect switches
- 1 MPPT with 20 fused inputs for maximum flexibility
- Copper- and aluminum-compatible AC connections
- NEMA Type 4X outdoor rated enclosure
- Advanced Smart-Grid features (CA Rule 21 certified)
- kVA headroom yields 100 kW @ 0.9 PF and 125 kW @ 0.95 PF
- Generous 1.87 (100 kW) and 1.5 (125 kW) DC/AC inverter load ratios
- Separable wire box design for fast service
- Enhanced DC wire boxes available



Distributed



Centralized



Distributed



Centralized

Standard Wire Boxes

Enhanced DC Wire Boxes



Model Name	CPS SCH100KTL-DO/US-600	CPS SCH125KTL-DO/US-600
DC Input		
Max. PV power	187.5 kW	
Max. DC input voltage	1500 V	
Operating DC input voltage range	860-1450 Vdc	
Start-up DC input voltage / power	900 V / 250 W	
Number of MPP trackers	1	
MPPT voltage range ¹	870-1300 Vdc	
Max. PV short-circuit current ²	220 A	
Number of DC inputs	Distributed Wire Box: 20 PV source circuits, positive and negative fused Centralized Wire Box: 1 input circuit, 1-2 terminations per pole, non-fused	
DC disconnection type	Load-rated DC switch	
DC surge protection	Type II MOV (with indicator/remote signaling)	
AC Output		
Rated AC output power ³	100 kW	125 kW
Max. AC apparent power (selectable ⁴)	100 kVA / 111 kVA (PF>0.9)	125 kVA / 132 kVA (PF>0.95)
Rated output voltage	600 Vac	
Output voltage range ⁵	528-660 Vac	
Grid connection type ⁶	3Φ / PE / N (neutral optional)	
Max. AC output current @ 600 Vac	96.2 A (@ 100 kVA) / 106.8 A (@ 111 kVA)	120.3 A (@ 125 kVA) / 127.0 A (@ 132 kVA)
Rated output frequency	60 Hz	
Output frequency range ⁵	57-63 Hz	
Power factor	>0.99 (±0.8 adjustable)	
Current TRD @ rated load	< 3%	
Max. fault current contribution (1 cycle RMS)	41.47 A	
Max. OCPD rating	200 A	
AC disconnection type	Load-rated AC switch	
AC surge protection	Type II MOV (with indicator/remote signaling)	
System		
Topology	Transformerless	
Max. efficiency	99.1%	
CEC efficiency	98.5%	
Standby / night consumption	< 4 W	
Environment		
Enclosure protection degree	NEMA Type 4X	
Cooling method	Variable speed cooling fans	
Operating temperature range ⁴	-22°F to 140°F / -30°C to 60°C	
Non-operating temperature range	-40°F to 158°F / -40°C to 70°C	
Operating humidity	0-100%	
Operating altitude	8202 ft / 2500 m (no derating)	
Audible noise	< 65 dBA @ 1 m and 77°F (25°C)	
Display and Communication		
User interface and display	LED indicators, Wi-Fi and app	
Inverter monitoring	Modbus RS485	
Site-level monitoring	CPS FlexOM Gateway (1 per 32 inverters)	
Modbus data mapping	SunSpec / CPS	
Remote diagnostics / firmware upgrade functions	Standard / (with FlexOM Gateway)	
Mechanical		
Dimensions (W × H × D)	Distributed Wire Box: 45.28 × 24.25 × 9.84 in (1150 × 616 × 250 mm) Centralized Wire Box: 39.37 × 24.25 × 9.84 in (1000 × 616 × 250 mm)	
Weight	Inverter: 121 lbs (55 kg) Distributed Wire Box: 55 lbs (25 kg) Centralized Wire Box: 33 lbs (15 kg)	
Mounting / installation angle	15-90 degrees from horizontal (vertical or angled)	
AC termination	M10 stud type terminal [3Φ] (wire range: 1/0 AWG-500 kcmil CU/AL; lugs not supplied) Screw clamp terminal block [N] (#12-1/0 AWG CU/AL)	
DC termination	Distributed Wire Box: Screw clamp fuse holder (wire range: #12-#6 AWG CU) Centralized Wire Box: Busbar, M10 bolts (wire range: #1 AWG-500 kcmil CU/AL [1 termination per pole], #1 AWG-300 kcmil CU/AL [2 terminations per pole]; lugs not supplied)	
Fused string inputs	Distributed Wire Boxes: 20 A or 25 A fuses provided (fuse values up to 30 A acceptable)	
Safety		
Certifications and standards	UL 1741-SA/SB Ed. 3, CSA-C22.2 NO.107.1-01, IEEE 1547-2018, FCC PART15	
Selectable grid standards	IEEE 1547a-2014, IEEE 1547-2018 ⁷ , CA Rule 21, ISO-NE	
Smart-grid features	Volt-RideThru, Freq-RideThru, Ramp-Rate, Specified-PF, Volt-VAR, Freq-Watt, Vol-Watt	
Warranty		
Standard	5 years	
Extended terms	10, 15, and 20 years	

1) See user manual for further information regarding MPPT voltage range when operating at non-unity PF.

2) The sum of parallel-connected PV module short-circuit currents.

3) 100 kW active power derating begins at 113°F (45°C) when MPPT ≥ Vmin; 125 kW active power derating begins at 107.6°F (42°C) when PF = ±0.95 and MPPT ≥ Vmin, and at 113°F (45°C) when PF=1 and MPPT ≥ Vmin.

4) Inverters are factory set to 100 kVA and 125 kVA by default. Contact CPS to enable the higher kVA setting.

5) The "output voltage range" and "output frequency range" may differ according to the specific grid standard.

6) Delta configurations must not be corner-grounded.

7) Firmware version 12.0 or later required.